

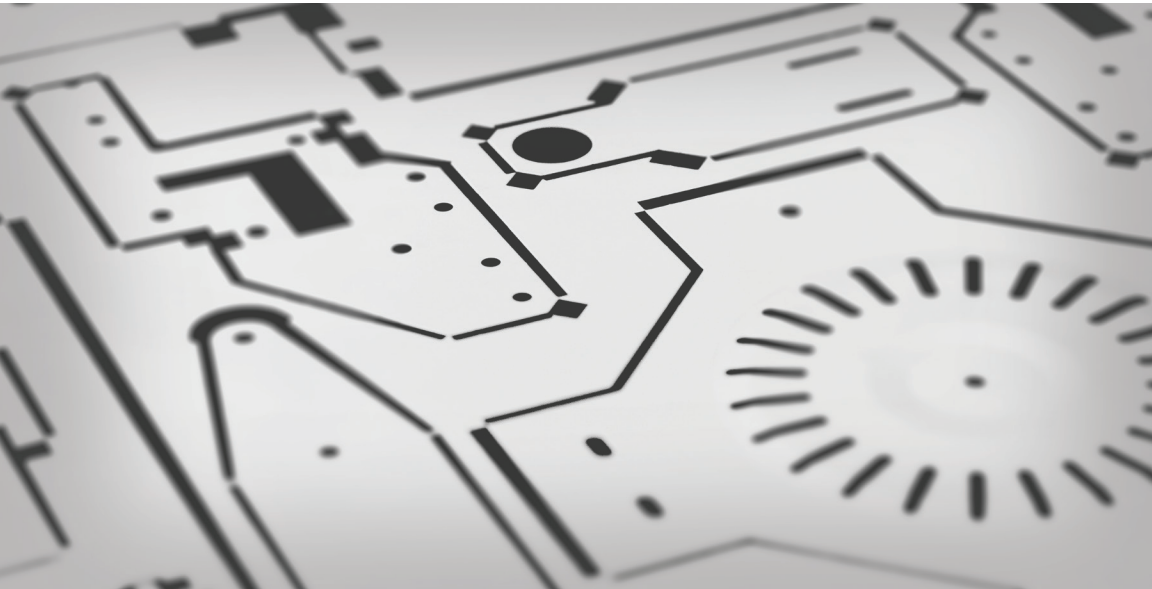
MATE PRECISION TOOLING

INTL



RESPECT • SUPPORT • INSPIRE

PRODUCT LINE



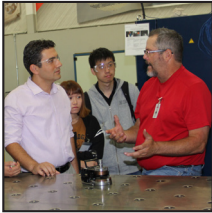
INNOVATIVE FABRICATING SOLUTIONS FOR
SHEET METAL APPLICATIONS

MATE'S MISSION AND PROMISE TO YOU:

To personally **respect, support** and **inspire** sheet metal professionals around the world with high-quality precision tooling and services.

FIVE DECADES OF GLOBAL EXCELLENCE

Founded in 1962, Mate is a world-class manufacturer of superior sheet metal fabrication products and solutions. We manufacture tooling for every major CNC punch press. In North America, we also offer a complete line of press brake tooling, CO₂ and fiber laser consumables. Mate products and services are available worldwide, fully supported by over than 80 dealers in every industrialized country.



WE RESPECT YOU PERSONAL CONNECTIONS

Mate does business with people, not companies. Our connection to you is personal. Mate's team of manufacturing and sheet metal professionals knows what you go through. We know what it's like to compete for that next job, manage deadlines or even need a rescue. With Mate you have a partner that respects your knowledge and is dedicated to helping you succeed.



WE SUPPORT YOU YOUR GO-TO SOURCE

In your plant. Or on the phone. From our Sales Engineers and Customer Service, to our machinists and shipping department, Mate is pulling for YOU. Mate's in-field sales engineers know from experience what happens on the shop floor. They speak your language, fully capable of helping you improve processes and solve problems. Inside Mate, Customer Service makes quoting and ordering tooling fast and easy, guiding it through our world class manufacturing systems to ensure you receive your order when you expect it.



WE INSPIRE YOU THINK BOLD, WE'VE GOT YOU COVERED

Whether it's on-site at your facility or in our Solution Center, Mate can inspire innovation from looking at new ways to use existing products or by developing new or specialty solutions that meet your specific requirements. Mate's team will assist you with a fast solution, whether it's a hinge, a building façade or a completely new challenge. Plus you're BACKED by our no-risk 100% customer satisfaction guarantee.

THICK TURRET TOOLING

QCT™ QUICK CHANGE TOOLING SYSTEM

Mate's QCT™ Quick Change Tooling System take insert-style punching systems to a whole new level! With its durable patent-pending design, tool-less punch retention mechanism and M4PM™ steel inserts, you'll be on your way to faster, more cost effective punching in no time. Available in Ultra® QCT™, Metric QCT™, AMX QCT™ an MXC QCT™ styles.

- Easy set-up & maintenance. No tools required!
- Longer lasting, superior insert performance
- Robust construction
- Simple



ULTRA TEC®

Mate's Ultra TEC® tooling system is our most versatile thick turret punching system with increased tool performance and flexibility, extended tool life and compatibility with existing systems.

- Premium high speed tool steel punches
- Fast and easy length adjustment
- Quick tool change
- Internal and external tool lubrication
- Hardened guides with 5 keyways
- Slug Free® dies



ULTRA XT™

Mate's Ultra XT™ precision tooling system is a thick turret punching system that increases tool performance and flexibility, offers extended tool life and compatibility with existing systems.

- Premium high speed tool steel punches
- Fast and easy length adjustment
- Quick tool change
- Internal and external tool lubrication
- Hardened guides with 2 keyways
- Slug Free® dies



THICK TURRET TOOLING

ORIGINAL STYLE

For overall economy, Mate's Original Style thick turret tooling is fully OEM compatible tooling with several design enhancements.

- Premium high speed steel punches.
- Hexagon shaped heads in A and B stations for easier adjustment
- Reversible spring retainers in A and B stations for additional tool life
- Hardened guides
- Mate Slug Free[®] dies



ULTRAFORM[®], ULTRAFORM XT[™] AND ULTRAFORM FX[™]

Ultraform[®], Ultraform XT[™] and Ultraform FX[™] comprise Mate's top-of-the-line forming tool system. Packed with features that make your job easier and help reduce your tooling costs.

- Tool-less length adjustment - Ultraform and Ultraform XT
- Hardened guides with multiple angle settings
- One holder — unlimited forming solutions

Ultraform[®] holders include precise and convenient length adjustment mechanisms that allow fine adjustment to achieve high quality piece parts.

Ultraform XT[™] is for those situations where you want flexibility but don't frequently adjust tool length.

Ultraform FX[™] is perfect for machines with precision stroke control. A fixed length forming tool, Ultraform FX[™] lets you take advantage of the machine's program capability.



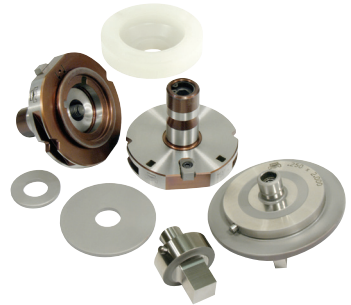
TRUMPF STYLE TOOLING

From our high performance NEXT™ insert tooling system, the convenience of Mate QuickLock™ or the economy of Mate Trumpf Style, Mate offers a broad range of products for your Trumpf punch press.

MATE NEXT™ INSERT TOOLING SYSTEM

The Mate NEXT™ insert tooling system is a high performance tooling system designed to maximize tool life, minimize tool set-up times, improve accuracy, reduce punching costs, and maximize productivity.

- Size 40: 0.031(0.80) to 1.575(40.00)
- Size 76: 1.575(40.00) to 3.000(76.20)
- M4PM™ tool steel
- Urethane strippers available



MATE QUICKLOCK™ TOOLING SYSTEM

The Mate QuickLock™ tooling system combines the economy of conventional Trumpf style tooling with the convenience of alignment via a keyed alignment ring.

- Quick tool alignment
- Fast tool set-ups
- High Speed Steel
- Alignment ring with a keyway
- Urethane strippers



MATE TRUMPF STYLE TOOLING SYSTEM

The Mate Trumpf Style tooling system is designed to enable fabricators to produce high quality piece parts, economically.

- High Speed Steel
- Uniform corner clearance radii for improved die strength
- Urethane strippers available



THIN TURRET TOOLING

Mate's Thin Turret tooling systems for Strippit style punch presses guarantees superior performance in every punching application.

XCEL™

Mate Xcel™ is a high performance tooling system with features designed to reduce set-up time, ease tool adjustments and extend tool life.

STRIPPIT STYLE

- Mate Durasteel™ punches
- Fast length adjustment
- Slug Free® die design
- MTG™ — Multi Tool Systems



SALVAGNINI TOOLING

Mate's high speed steel punches, dies and strippers compliment Salvagnini's punching system like no other. Mate's complete range of standards, special shapes and forming assemblies expand Salvagnini's metal fabricating system to the fullest.



MULTI TOOL TOOLING

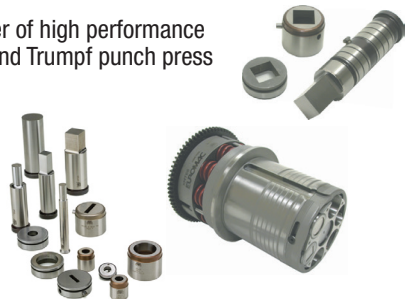
Mate is a world leading manufacturer and OEM supplier of high performance Multi Tool systems for popular thick turret, thin turret and Trumpf punch press applications.

XMT TOOLING

The world's first and only tooling designed specifically for Euromac punch presses.

MT™ & MTG™ TOOLING

High performance tooling systems designed for continuous service in multi tool assemblies.



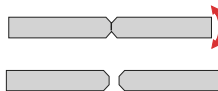
MATE SNAPLOCK™

Fabricate joints without welding or fastening.
Eliminates secondary operations.



MATE EASYSNAP™

Scrapless part retention system. Simply snap punched components out of sheet metal.



MATE ROLLERBALL™

Continuous beads, stiffening ribs, and oversized embosses on a punch press.



MATE SHEETMARKER™

Inscribe or mark components on a punch press. Ideal for logos, instructions or serial numbers.



MATE HEXLOCK™

Provides a reliable and secure method of retaining common threaded fasteners.



MATE EASYTAP™

Produce threaded holes on a punch press in previously punched or extruded holes.



MATE PRECISION TOOLING GLOBAL COVERAGE



WORLDWIDE HEADQUARTERS:

1295 Lund Boulevard, Anoka, Minnesota 55303 USA
Tel +1.763.421.0230 mate.com

orders@mate.com
shop.mate.com

Copyright © Mate Precision Tooling Inc. All Rights Reserved.
All trademarks and trade names are the property of their respective owners.